



# ISFX160



## Circulation Equipment

Inline Duct Fan manufactured for use in Class I, Division 2, groups B/C/D hazardous (classified) locations with an operating temperature code of T3 (320°F/160°C)

### FEATURES:

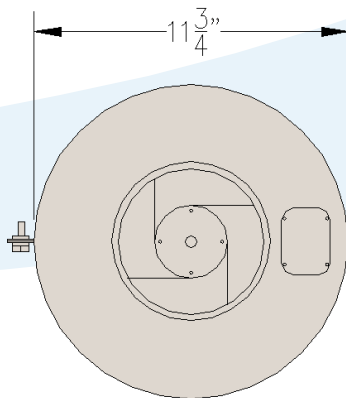
- \* Certified by Intertek (bearing the ETL mark) for compliance to both Canadian and US applicable codes and standards
- Suitable for indoor and outdoor use
- Mounting bracket furnished for indoor or outdoor installation
- 115 volts AC, single phase, 60 Hz power requirements
- Spark resistant construction
- ½" NPT conduit connection for easy power wiring
- Can be used with or without circular duct
- Functions as supply or exhaust fan
- Limited stock available for shorter lead time

### APPLICATIONS:

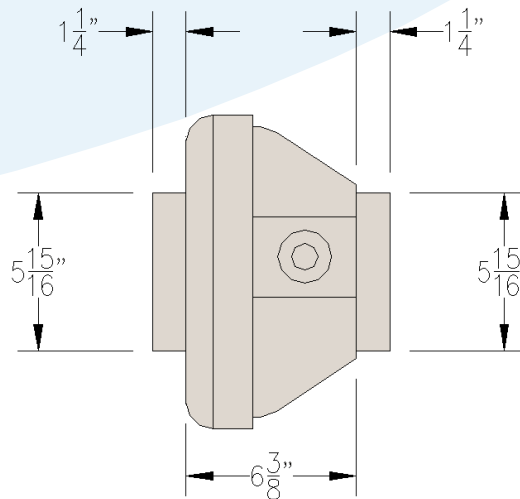
- Small control cabinets
- Lavatory ventilation
- Sewage treatment plants



END VIEW



SIDE VIEW



\*Performance is based on ducted outlet.

ISFX160	CIRC	Unit Weight (lbs)	Unit Weight (kg)	Duct Size	Phase - Volts	Rated Watts	Max Amps	RPM	* Air Flow (CFM) at Static Pressure (IN W.C.)
20			9	6"	115-1	129	1.14	2750	0.0
								289	0.2
								260	0.4
								233	0.6
								206	0.8
								179	1.0
								154	1.5
								89	

SHIELD AIR SOLUTIONS, INC. • 3708 GREENHOUSE ROAD • HOUSTON, TEXAS 77084 • 281.944.4300 •



\*Certification may not apply to all optional configurations. Please contact our Technical Sales department for more information  
 This document was last edited on 04/18/2019  
 Availability and information is subject to change without notice.  
 Marc Climatic Controls and Birdwell are product lines of Shield Air Solutions, Inc. All rights reserved